

MEET 10 INSPIRATIONAL, ACCOMPLISHED & ENGAGING LOCAL WOMEN

Society Life®

NORTHEAST TARRANT

JULY 2017



Patients Thrive With Their Team Care Approach

POWER IN NUMBERS

Get Your Life Back at the Institute of Spinal Disorders

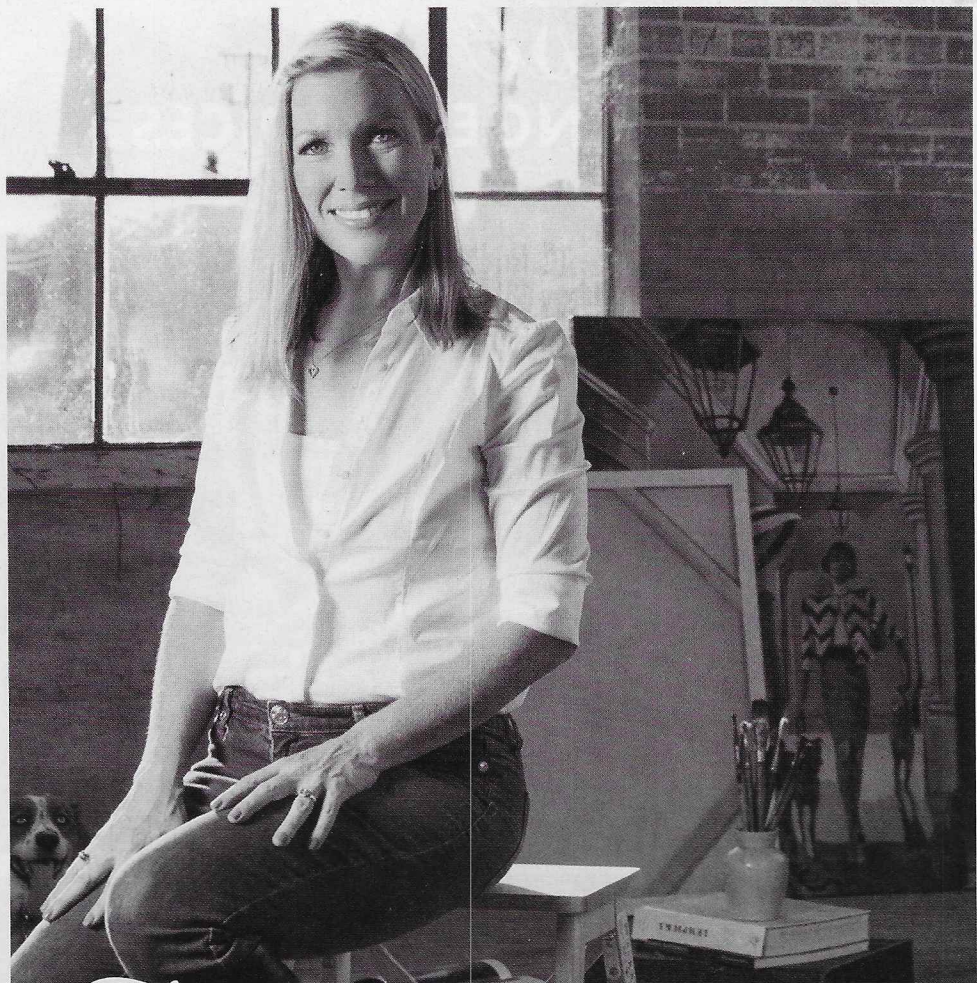
Artist Trish Biddle has donated many of her paintings to help charities raise funds for their causes. She's made a difference for so many by supporting these wonderful organizations:

**The Eva Longoria Foundation
Angels on a Leash
Girl Scouts
Make-A-Wish Foundation
Shining Stars
Arts Council Northeast
Southwest Transplant Fdn.
Westlake Public Arts Society
GRACE Grapevine
Greater Southlake
Women's Society**

Trish is honored to have been commissioned for artwork by:

**The Kentucky Derby
134th Run for the Roses
Kentucky Oaks
Hamptons Classic
Del Mar Thoroughbred
Racing Club
Twice she was named the
official art and artist for the
Westminster Dog Show**

Her daughter's recent diagnosis of Auto Immune Encephalopathy (aka PANDAS) is a revelation in lack of advocacy. She's driven to bring awareness and research to this immune disorder. For details: PandasNetwork.org



TRISH BIDDLE

ARTIST, CREATOR, OWNER OF 'GLAMOROUS WOMEN IN FABULOUS PLACES' BRAND

"Trust in the Lord with all my heart and lean not on my own understanding and my ways, but acknowledge Him and He will make my paths straight."

HER WORDS TO LIVE BY

American artist Trish Biddle's paintings are in corporate and private collections around the world. Trish studied at the Dallas Institute of Art before beginning her career as a fashion illustrator and textile designer for a major corporation. Tired of the corporate life, she branched out on her own as a freelance artist for several design studios in New York and Los Angeles. Several years later and still wanting to pursue her dream of becoming a fine art painter—she purchased paints, brushes and canvases... and the rest is history as they say!

With a well-defined style, broad, romantic strokes and vibrant color, Trish paints floral, figurative, fashion icons and children's art. She travels the world and enjoys translating her experiences into oil on canvas. Her art brand "Glamorous Women in Fabulous Places" brings to life romantic images with her unmistakable retro-vintage figurative painting style. When asked about her greatest professional

accomplishment, she shares that it's being commissioned by Churchill Downs for the Kentucky Derby. But, her future goals include inspiring young women to pursue their own dreams and overcome the obstacles of fear and low self-esteem. "I hope to set a positive example and use my talents to inspire, raise funds and show girls how to reach their goals."

Trish's paintings allow viewers to escape reality—they escape the daily grind under the Eiffel tower, at the Louvre, driving on Rodeo Drive or down Highway 1, in New York City or with cappuccino in Florence. They're dressed and ready for anything in a vintage convertible with a girl's best friend—her Italian greyhound. Trish asks, "Do you ever have one of those days when you see a TV commercial or an ad in a travel magazine where the image makes you dream? Wherever your dreams may take you, reality can wait. This is where I find my inspiration... I dream and I imagine."